



The role of the Fire and Rescue Service in building inspections

European Fire Safety Week

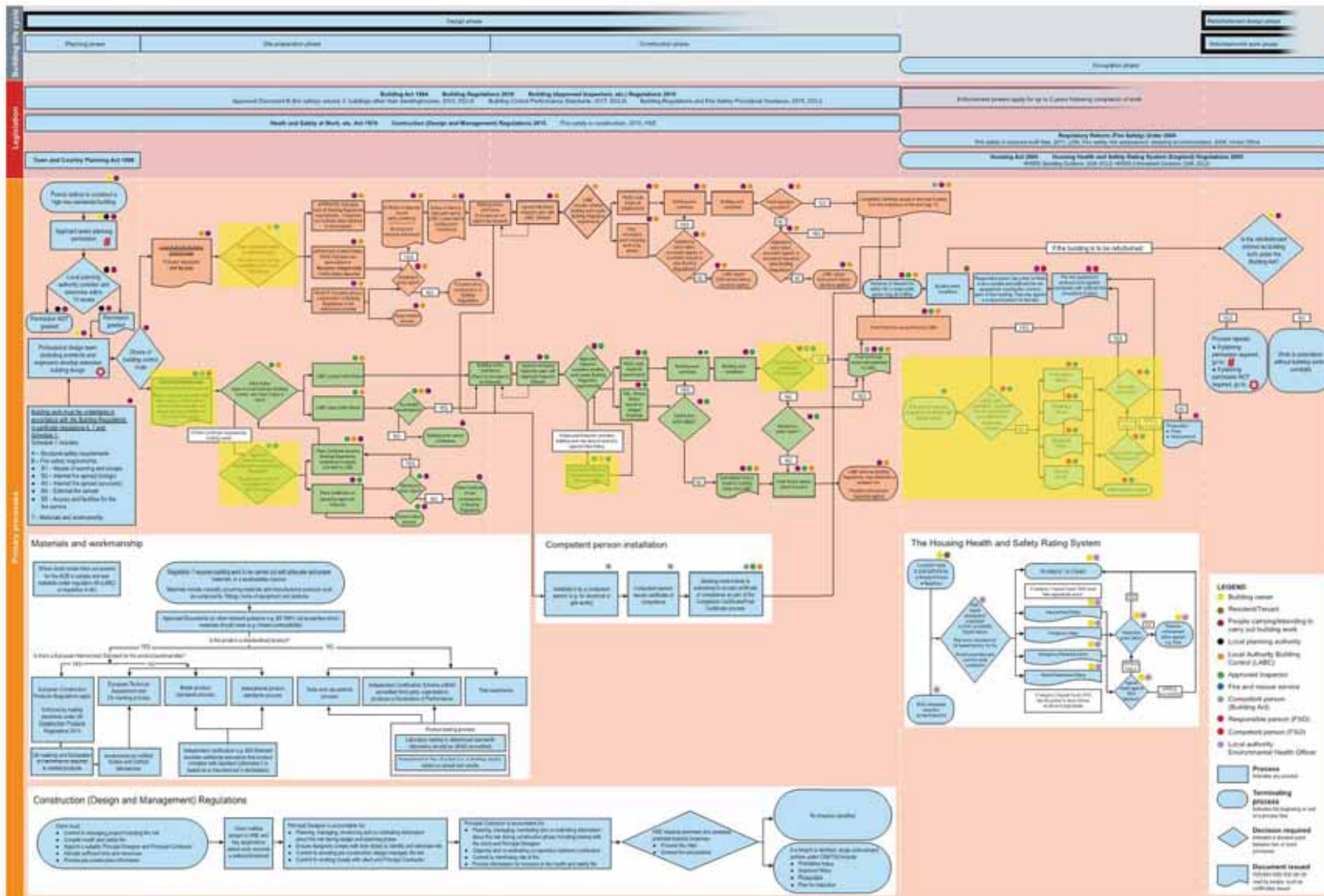
19th November 2019

Merlyn Forrer MEng (Hons) Fire FIFireE MSFPE

Merl@designfireconsultants.co.uk



Role of the FRS



<https://www.gov.uk/government/publications/independent-review-of-building-regulations-and-fire-safety-final-report>

Role of the FRS



- The saving of life and rescue of people
- Protection of property and prevention of escalation (etc.)
- Environmental protection
- Need the assistance of building regulations (B5)
 - (1) The building shall be designed and constructed so as to provide **reasonable** facilities to assist firefighters in the protection of life.
 - (2) **Reasonable** provision shall be made within the site of the building to enable fire appliances to gain access to the building.
- What is reasonable - hydrant distances



Approved Document B



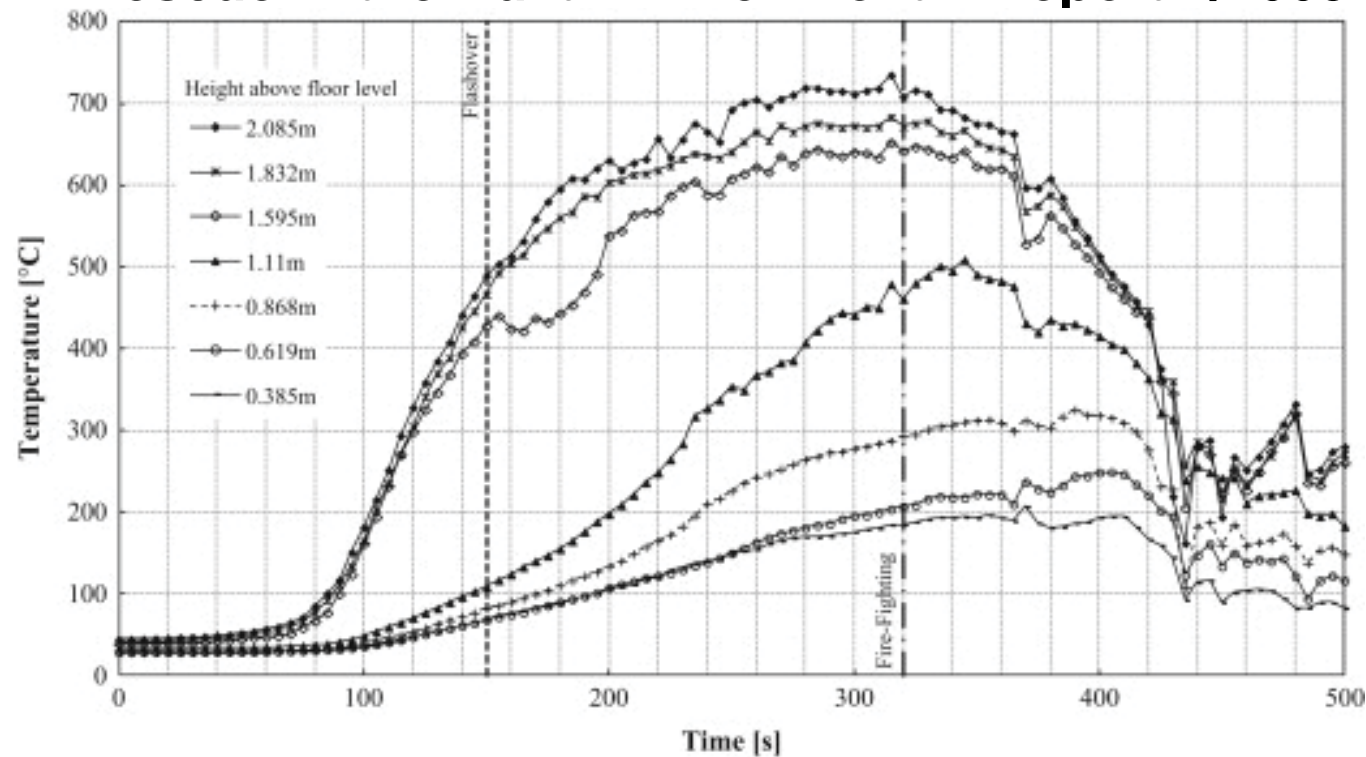
- 15 – fire mains and hydrants
- 16 – vehicle access
- 17 – access to buildings for firefighting personnel
- 18 – venting of heat and smoke from basements
- Relevant person – Regulatory Reform ‘Fire Safety’ Order 2005
 - Does not include a firefighter who is carrying out their duties in relation to the FRS Act 2004 – sections 7, 8 & 9

Firefighting in buildings – Lincoln Court





Physiological Assessment of Firefighting, Search and Rescue in the Built Environment – Report 2/2005



Physiological Assessment of Firefighting, Search and Rescue in the Built Environment – Report 2/2005



Figure 4.5 An example core temperature response to floor 2, firefighting team

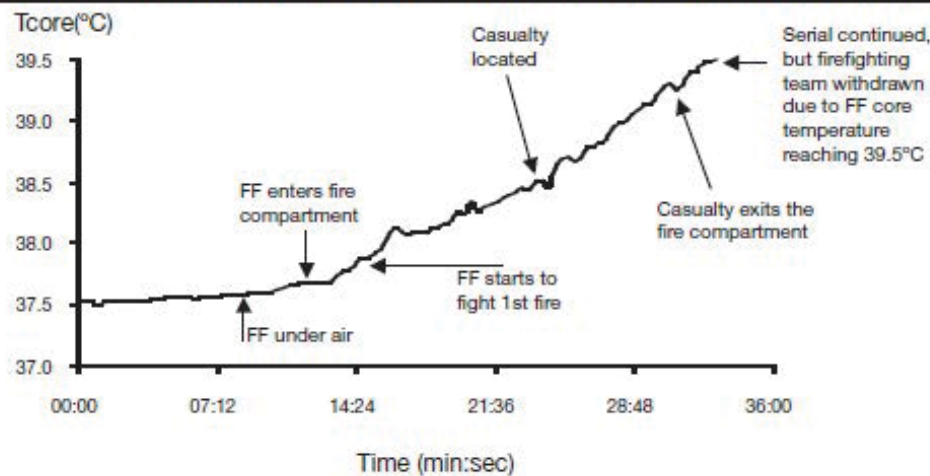
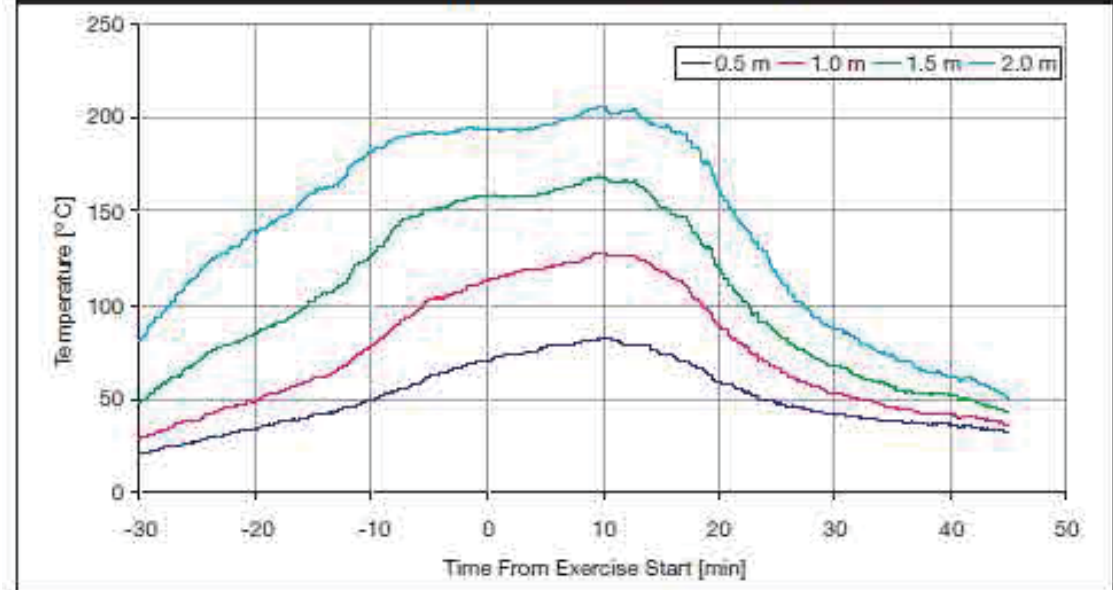


Figure 2.5 Mean temperatures in the fire compartments for all fires



Equipment

- 6 FF's – (4 BA, CM, ECO)
- 4 x BA sets with BA communications and cutters
- 1 x BA Entry Control Board
- 2 x High rise pack
 - Short length hose
 - Dividing breech
 - Door wedges
 - Keys, hand wheels, spanners, washers
 - Hose identification collars
 - Hand control branch
- 4 – 6 lengths 51mm hose
- 6 x fire-ground radios
- 1 x dry powder extinguisher
- 1 x Trauma pack
- 1 x 30m line
- Thermal image camera (TIC)
- Door ram
- PPV fan



Firefighting in buildings



Firefighting in buildings



- Travel distance
- 18 m – FF shaft – dry riser
- Based on post-war building studies – Fire Grading of Buildings
- 50 m - wet riser
- Based on various research including (Building Disasters Assessment Group – flow pressure at the branch)



Electrical cabling and fixings

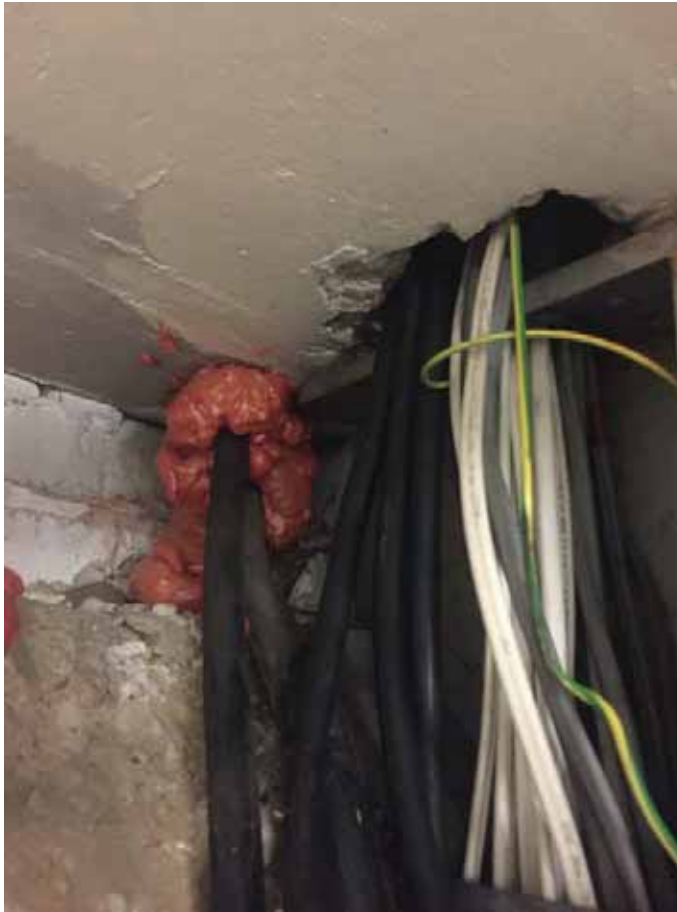
Rule 43 – Alan Bannon and James Shears



- Cable ties used in inverted trays
- Precludes the use of plastic clips, cable ties or trucking, where these products are the sole means of cable support
- BR are amended to ensure all cables are supported by fire-resistant cable supports



Passive fire safety



Passive fire safety



Passive fire safety



Passive fire safety



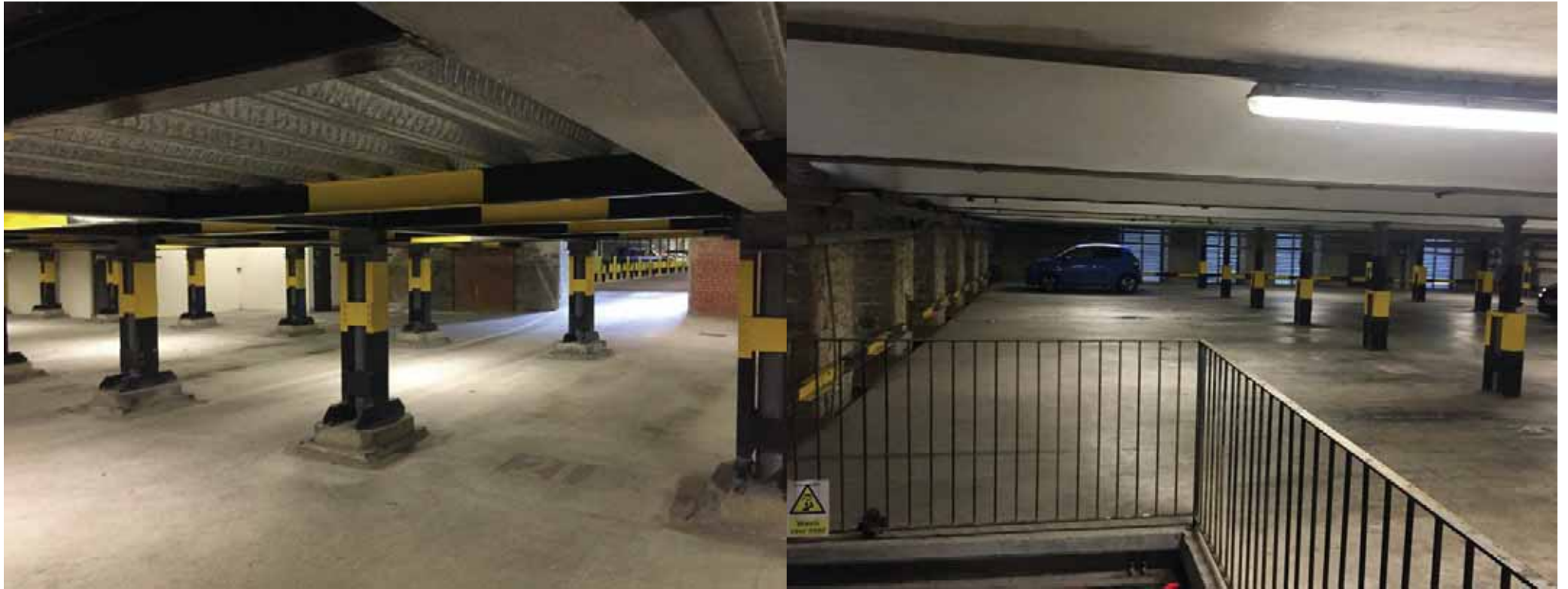
Passive fire safety



Passive fire safety



Fire protection of steel / iron



Fire protection of steel / iron



The Cube



The Cube



Lighthouse



Timber cladding BS8605



Photovoltaic panels



Photovoltaic panels



Car parking

- <30m = 15 mins FR (open sided)
- Car park for light vehicles - limited by hose laying distances
- 16,000 – 24,000 m² – 75% of perimeter
- 45m rule from a fire main outlet - 90m



External Surfaces



